

#178 Spring Cushion Hanger

Finish Bare Metal

Material Carbon Steel

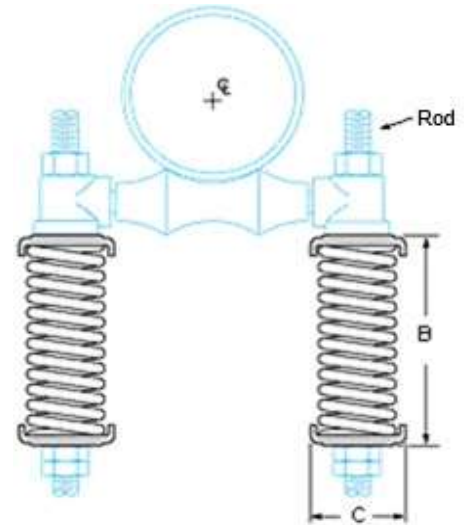
Recommended Used where piping is subject to negligible vertical movement but where a protective cushioning action is required.

When used with Fig. 95 Roller Hanger as illustrated, an excellent flexible support is provided for horizontal steam or hot water.

Note *Consists of a set of two springs and four retaining plates only.*

#95 Roller Assembly hangers sold separately.

When ordering, please specify spring type and rod size.



| SPRING TYPE | SPECIFICATION DATA | | | Max. Pipe Load LB | Deflection Rate LB/IN | Max Spring Deflection (IN) From Free Height | Approx. Wt Per 100 LB |
|-------------|--------------------|---------------|-------|----------------------|-----------------------------|---|--------------------------|
| | Max Rod Size | B Unloaded | C | | | | |
| 1 | 3/4 | 6 3/4 | 3 1/2 | 535 | 428 | 1 1/4 | 450 |
| 2 | 3/4 | 6 1/4 | 4 1/2 | 1500 | 1200 | 1 1/4 | 1400 |
| 3 | 1-1/2 | 9 3/8 | 4 1/2 | 3750 | 3000 | 1 1/4 | 2200 |

QWI 4.3.1 Issue Date Mar/25 Rev.6

Note: when referencing a printed copy of this specification page, please insure it is the latest version as found on our website at www.taylorwalraven.ca

For more information, please contact Customer Service at 1-800-263-8652